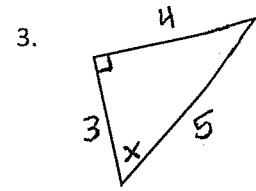
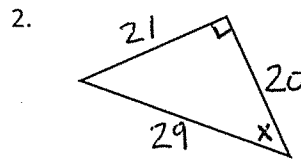
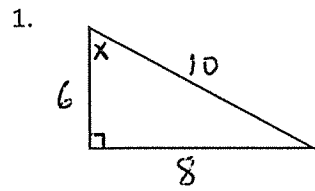


Sine, Cosine, and Tangent (Assignment 7)

For each of the three triangles below, find $\sin(x)$, $\cos(x)$, and $\tan(x)$ in lowest terms.



Calculate each of the following to the nearest thousandth.

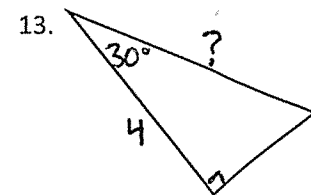
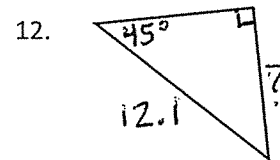
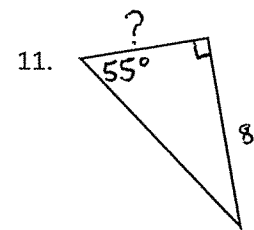
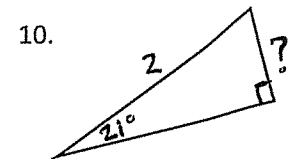
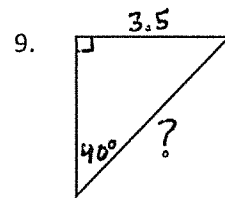
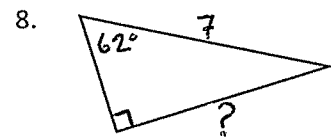
4. $\sin(18)$

5. $\cos(49)$

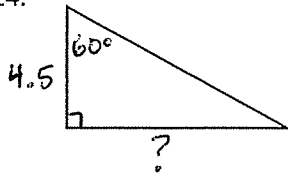
6. $\sin(80)$

7. $\tan(30)$

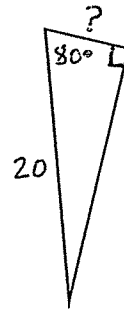
Find the length of the side labeled with a "?" on each of the triangles below.



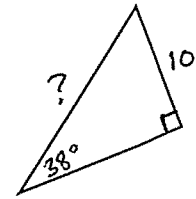
14.



15.



16.



17. A six meter long ladder leans against a building. If the ladder makes an angle of 60° with the ground, how far up the wall does the ladder reach? Draw a picture that illustrates this situation.