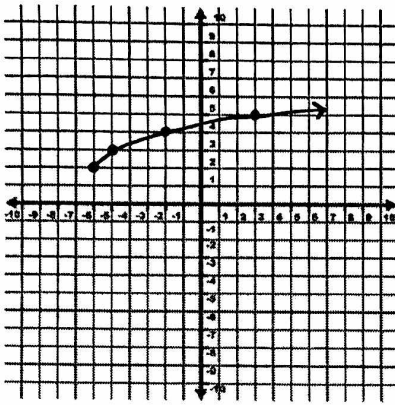


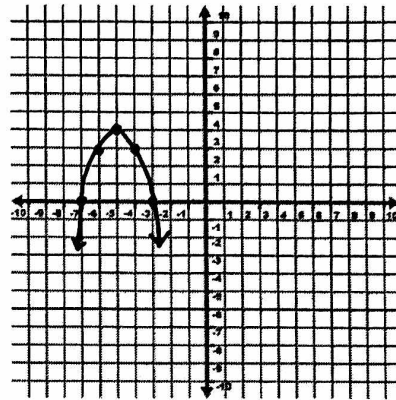
AA PREP—INTRODUCTION TO INVERSES WORKSHEET #1

1. Graph the inverse of each function. Draw in the reflection line.

a)

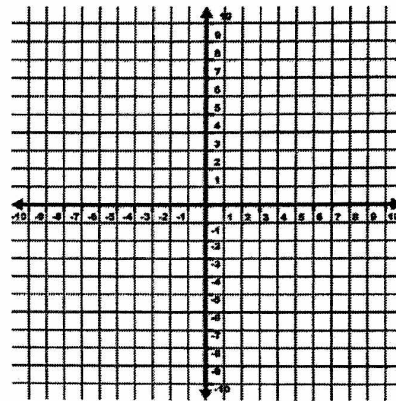


b)

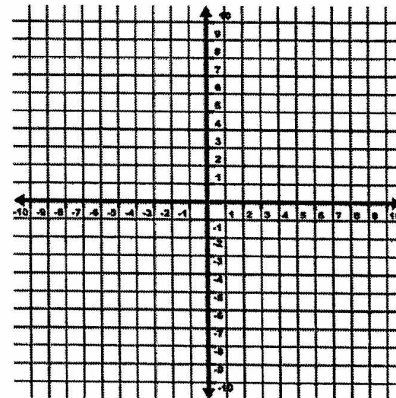


2. Find the inverse of each function. Graph the function and its inverse on the same coordinate plane.

a) $f(x) = \frac{1}{2}x + 3$



b) $g(x) = \sqrt{x-3}$



c) $h(x) = \sqrt[3]{x+2}$

