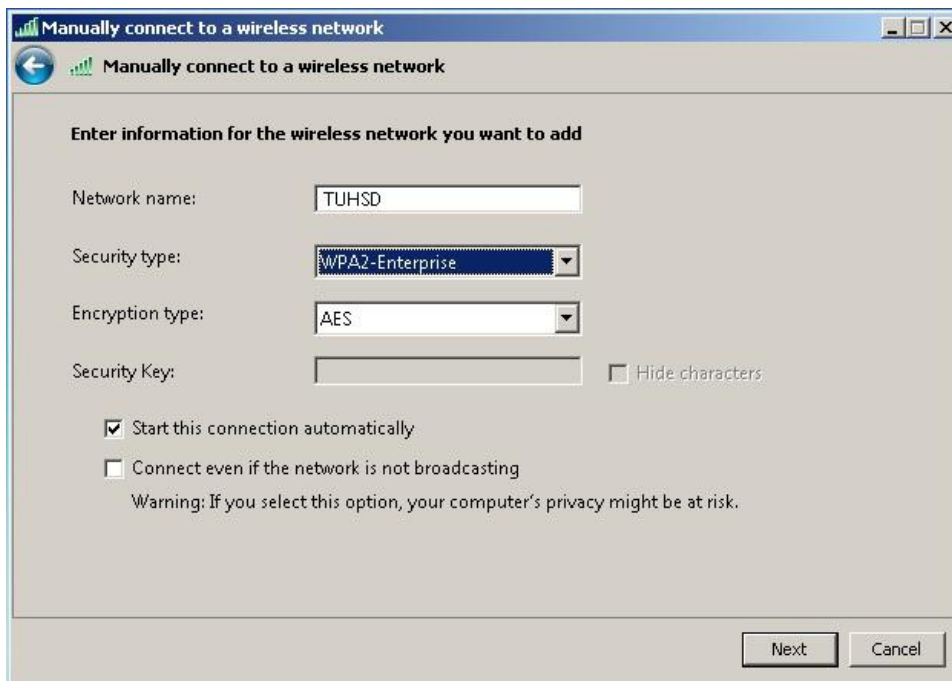


Personal Laptops on TamDistrict Wireless

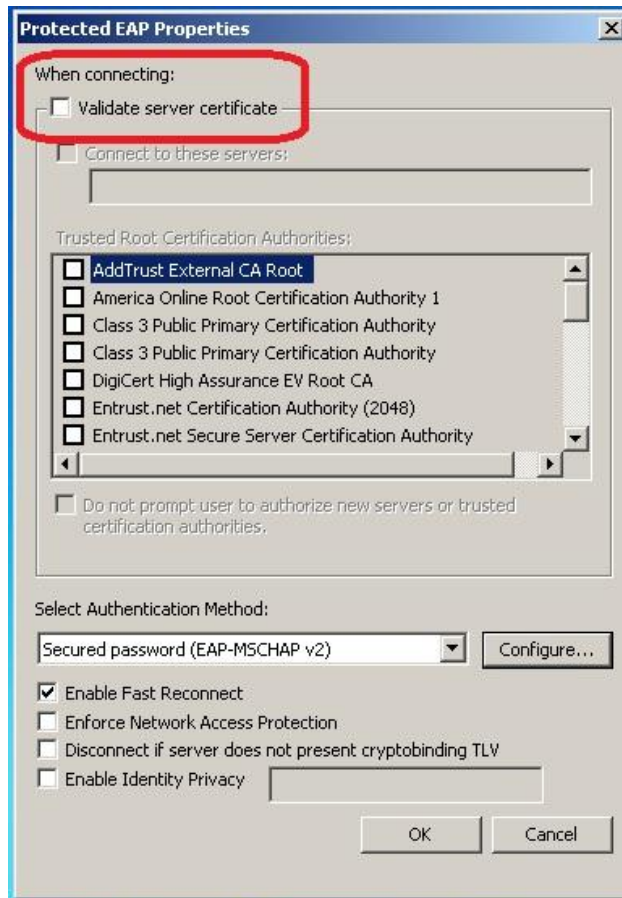
Steps for laptops running Windows 7:

These steps are for TamDistrict staff and students to join their personal Windows 7 laptop to the District wireless network. These steps should only have to be performed once, but should be followed carefully.

- Right-click on the wireless icon in the System Tray (near the clock), and select "Open Network and Sharing Center".
- Click on Manage Wireless Networks (on the left).
- Click on Add, then click "Manually create a network profile".
 - o Network name: enter TUHSD (must be entered in all caps).
 - o Security type: select "WPA2-Enterprise".
 - o Encryption type: select "AES".
 - o Leave all other settings on the default value.



- o Click Next, and then click "Change connection settings".
- Click the Security tab, then click on Settings (to the right of PEAP).
 - o Uncheck the box "Validate server certificate".



- Click on Configure (to right of EAP-MSCHAP v2), then uncheck the box "Automatically use my Windows logon name and password."



- Click OK, then click OK two more times.
- A prompt for credentials will appear (near the clock). Click on this prompt, then enter your TamDistrict user name and password. Click OK, and after 10+ seconds, the connection to TUHSD wireless will be finalized.