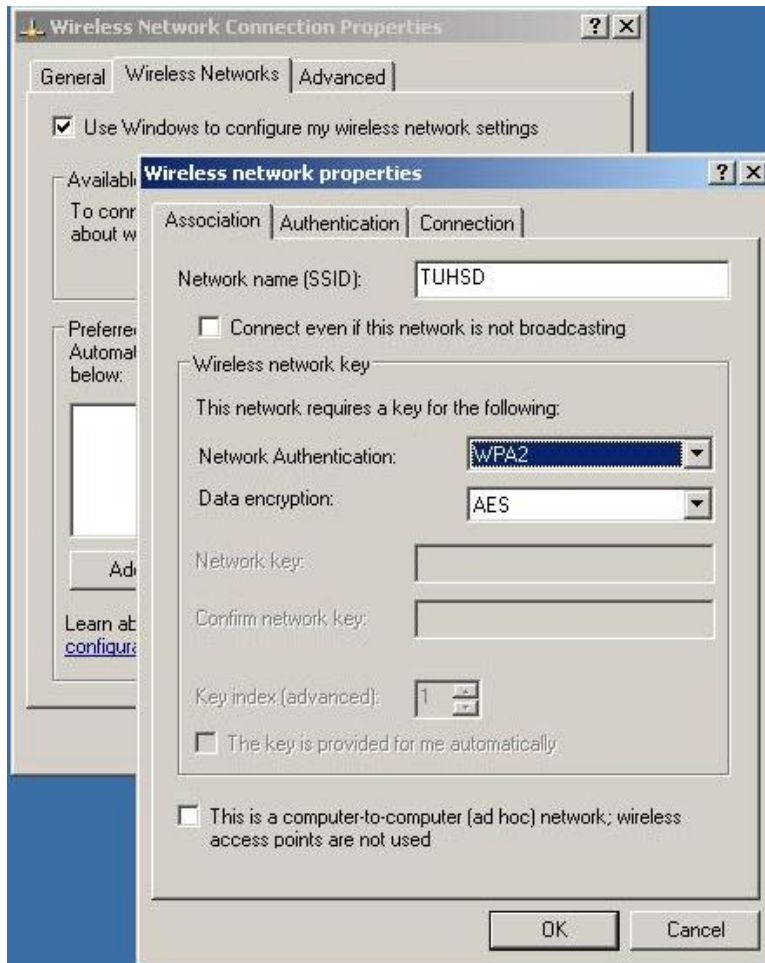


Personal Laptops on TamDistrict Wireless

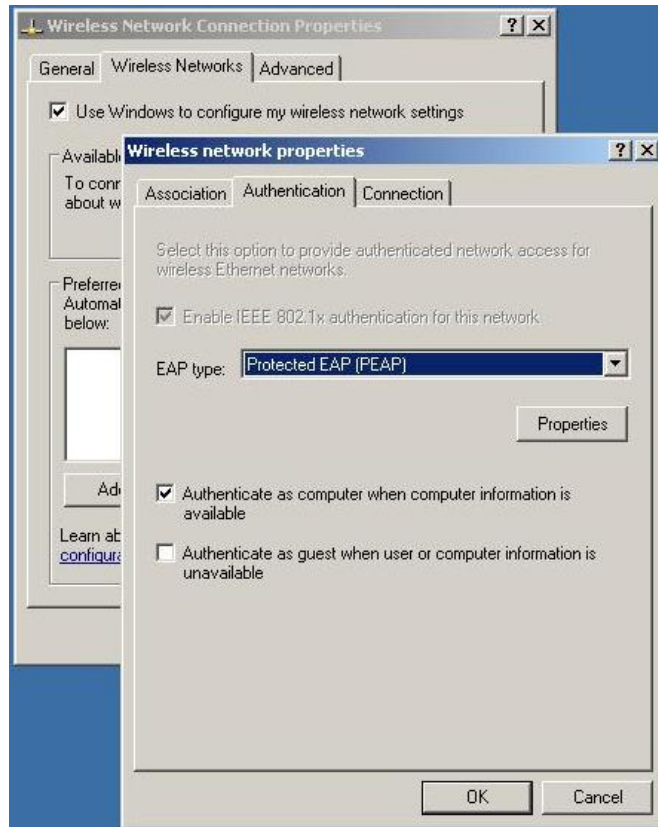
Steps for laptops running Windows XP:

These steps are for TamDistrict staff and students to join their personal Windows XP laptop to the District wireless network. These steps should only have to be performed once, but should be followed carefully.

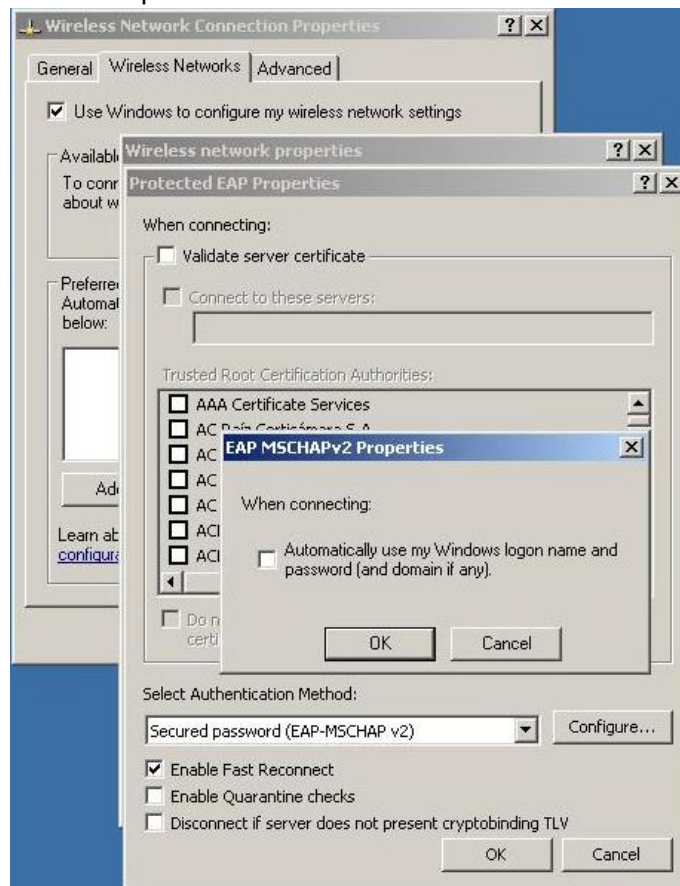
- Click on the wireless icon in the System Tray (near the clock).
- Click on "Change the order of preferred networks" (on the left).
- Click the Add button, enter the following:
 - o On the Association tab:
 - Network name (SSID): TUHSD
 - Network Authentication: WPA2
 - Data encryption: AES



- o On the Authentication tab:
 - EAP type: Protected EAP (PEAP)



- Click on Properties, and uncheck the box "Validate server certificate".
- Click on Configure, and uncheck the box "Automatically use my Windows logon name and password."



- Click OK, then click OK 2 more times to exit.
- Click on the balloon near the clock, prompting for credentials:



- In the next window, enter your TamDistrict logon credentials:
 - o User name: Your logon name
 - o Password: Your own password
 - o Domain: TUHSD



- Click OK. After 10-15 seconds, the connection to TUHSD wireless will be finalized.