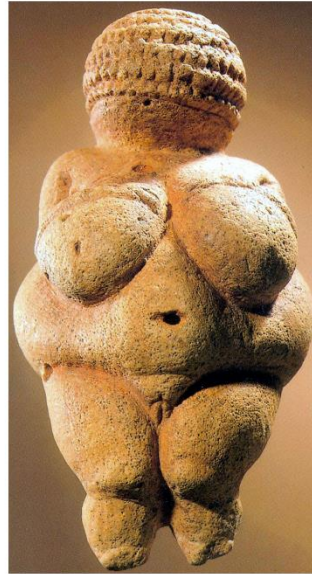


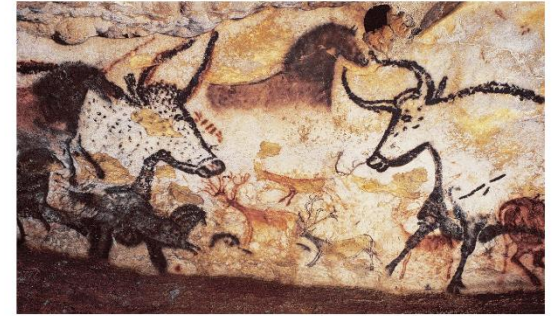
PREHISTORIC ART



**AP** Apollo 11 Stones  
c. 25,500-25,300 BCE  
Charcoal on stone



Venus of Willendorf  
c. 28,000 – 25,000 BCE

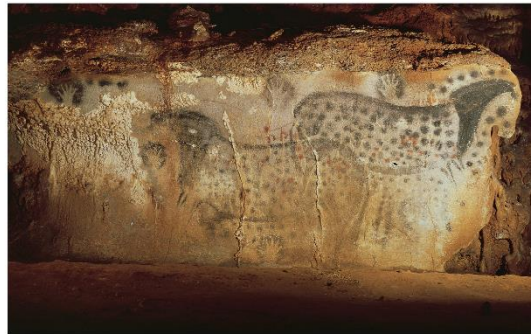


**AP** The Hall of Bulls  
c. 15,000 – 13,000 BCE

LASCAUX CAVE



Lion Man of Hohlenstein-Stadel  
c. 28,000 BCE.



Dappled Horses  
c. 23,000 BCE

PECH-MERLE CAVE



Fighting Rhinoceros, aurochs, & horses panel  
CHAUVET CAVE ca. 31,000 BCE

THE PALEOLITHIC PERIOD 30,000 - 9000

- 1.
- 2.

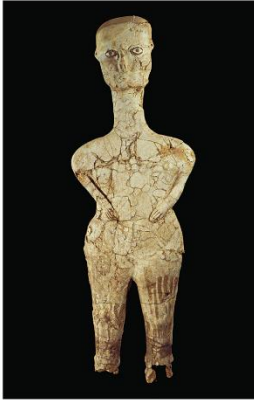
3.

THE NEOLITHIC PERIOD 8000 - 2300

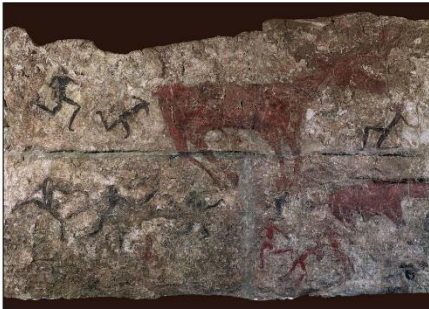
1.



Human skull with restored features from Jericho ca 7200-6700 BCE



Human figure, from Ain Ghazal, Jordan ca. 6750-6250 BCE



Deer Hunt from Çatal Höyük, Turkey ca 5750 BCE



AP Beaker with Ibex Motifs 4200-3500 BCE, terra-cotta



AP Anthropomorphic Stele 4th Millennium BCE Sandstone



AP Stonehenge Salisbury Plain, England c. 3100-1100 BCE

VOCABULARY

corbeled vault

megalith

mural

composite view

composition

freestanding sculpture

henge

Neolithic

Paleolithic

EARLY NEOLITHIC 8000 - 5000 BCE

1.

2.

3.

LATER NEOLITHIC 5000 - 2300 BCE

1.