

1.
2.

3.



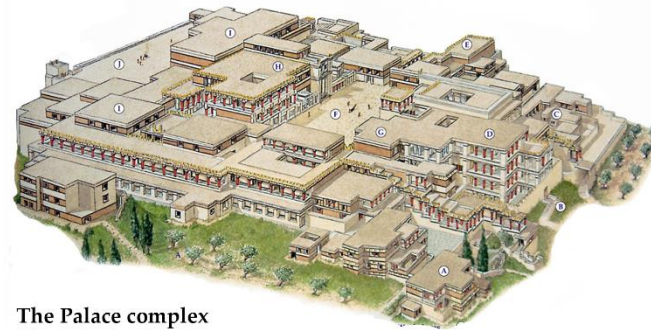
Figurine of a woman from Syros
Cyclades, Greece
ca. 2600-2300 BCE
Marble, 1 6" high



Male harp player from Keros
Cyclades, Greece
ca. 2600-2300 BCE
9" high

VOCABULARY

- Corbel Arch
- Cyclopean masonry
- Repousse
- Fresco



The Palace complex
Knossos, Crete
c. 1700-1370 BCE



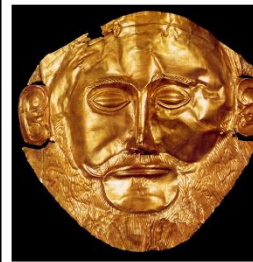
Bull-leaping from the palace
Knossos, Crete, Greece
ca. 1500 BCE, fresco



Marine-style Octopus Vase
ca. 1500 BCE
11' High



Lion Gate (looking east)
ca. 1500 BCE
Mycenae, Greece
ca. 1300-1250 BCE
Limestone



Funerary Mask, from Grave Circle A
ca. 1600-1500 BCE. Beaten Gold.
12" High.



Warrior Vase (krater) from Mycenae, Greece
ca. 1200 BCE
1' 4" high

CYCLADIC ART & CULTURE 3000-2000

1.

MINOAN ART & CULTURE 2000-1400

1.
2.

MYCENAEAN ART & CULTURE 1600-1200

1.
2.

OVERVIEW

- 1.
- 2.

- 3.
- 4.

THE ETRUSCANS



5 Lion-Headed Lebes from The Regolini-Galassi Tomb Cerveteri, Italy
Bronze, 18" high
ca. 650-640



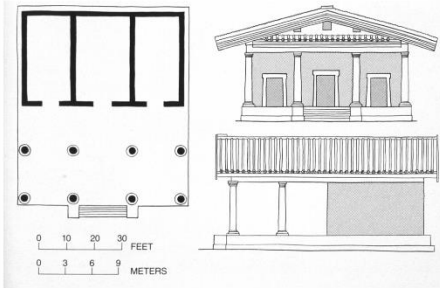
Fibula with Orientalizing Lions from The Regolini-Galassi Tomb Cerveteri, Italy
650-640 BCE, Gold, 1 1/2" high

VOCABULARY

- Necropolis
- Terra-cotta
- Triclinium
- Tumulus
- Tuscan Order

ORIENTALIZING 700-600

- 1.



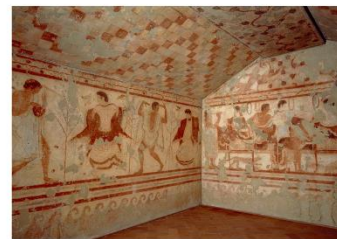
AP Temple of Minerva
510-500 BCE
mud brick or tufa & wood
Veii, Italy

AP Apollo of Veii from the roof of the Portonaccio Temple (dedicated to Minerva)
Veii, Italy
ca. 510-500 BCE
Painted terracotta, 5' 11" high



AP Sarcophagus of the Spouses from the Banditaccia Necropolis Cerveteri, Italy
ca. 520 BCE

AP Tomb of the Triclinium Monterozzi necropolis Tarquinia, Italy
ca. 480-470 BCE



ARCHAIC 600-480

- 1.
- 2.



Capitoline Wolf from Rome, Italy
ca. 500-480 BCE
Bronze, 2' 7 1/2"



Sarcophagus of Romtha Visnai & Arnth Tetnies from Vulci, Italy
c. 350 BCE
Travertine

An Etruscan Arch - label



CLASSICAL & HELLENISTIC 480-89 BCE

- 1.
- 2.